

# TARGA 53 GT

Indulge your passion for exploration  
in the finely-crafted Targa 53 GT



Every. Perfect. Detail.





# Over the waves to your favourite locations in style

You've stocked the provisions, chosen a bay to explore and your guests are on board. The muscular power and grace of the Targa 53 GT awaits to take you all on an exhilarating journey.

From the visual impact of its bold and beautiful design, the Targa 53 GT has been carefully considered with uninterrupted freedom in mind. Every detail of the interior is thoughtfully created for maximum space, light and enjoyment.

Expert engineering gives exceptional handling, with a top speed in excess of 30 knots. Your party can relax on the open-plan main deck, with its spacious cockpit and retractable hardtop, sleep soundly in the spacious cabins, or shower down after a swim – all in perfect harmony.





# Intuitively ready for every journey

From the generous layout to the power of the engines, the Targa 53 GT has every little detail covered for enjoyable explorations on the high seas.

- **A bright, airy saloon with marble inset detailing**
- **Multiple layout options to suit your requirements**
- **Cockpit seating with sunpad conversion**
- **40" LCD television to saloon**
- **Optional gyroscopic stabiliser**
- **An optional cabin for crew**
- **A choice of powerful engines:**
  - 2 x Volvo Penta D11-675 shaft drive, diesel with 675mhp each and an estimated maximum speed of 30 knots
  - 2 x Volvo Penta D11-725 shaft drive, diesel with 725mhp each and an estimated maximum speed of 32 knots
  - 2 x Caterpillar C12.9 shaft drive, diesel with 850mhp each and an estimated maximum speed of 34 knots









The Targa 53 GT gracefully  
provides everything for the perfect adventure







[INTRODUCTION](#)

[MAIN FEATURES](#)

[EXTERIOR DESIGN](#)

[INTERIOR DESIGN](#)

[DIMENSIONS](#)

[FLOOR PLANS](#)

[FULL SPECS](#)

[DEALERS](#)



# The choice of interior is equally extensive

This is especially true, given the fact that we have handpicked four beautiful interior design schemes for you to choose from:



## AMALFI

Inspired by Liguria's local architecture, this scheme exudes the sunny warmth synonymous with fragrant Italian lemon trees and the umbrella-lined shores of the Amalfi coast.



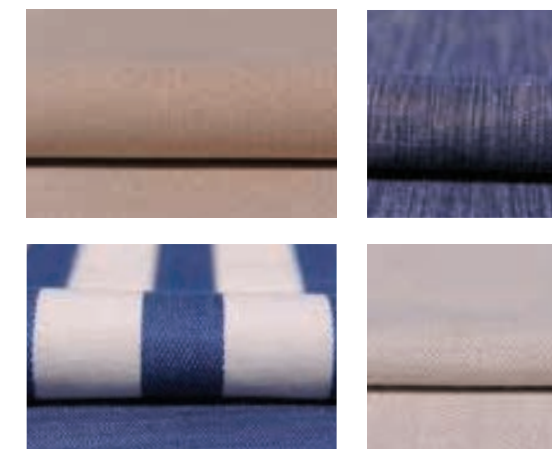
## CAPRI

Understated, earthy colours, effortlessly combined with rich natural textures. All the hallmarks of an interior design collection that is as gentle as the Mediterranean breeze.



## HAMPTONS

Evoking elegant vintage design cues, whilst offering a bold and contemporary interpretation of the luxury that was once the preserve of America's East Coast.



## ST. TROPEZ

An ode to the sea where all manner of deep, oceanic blues tastefully swirl with muted greys, delicate creams and classic nautical motifs.



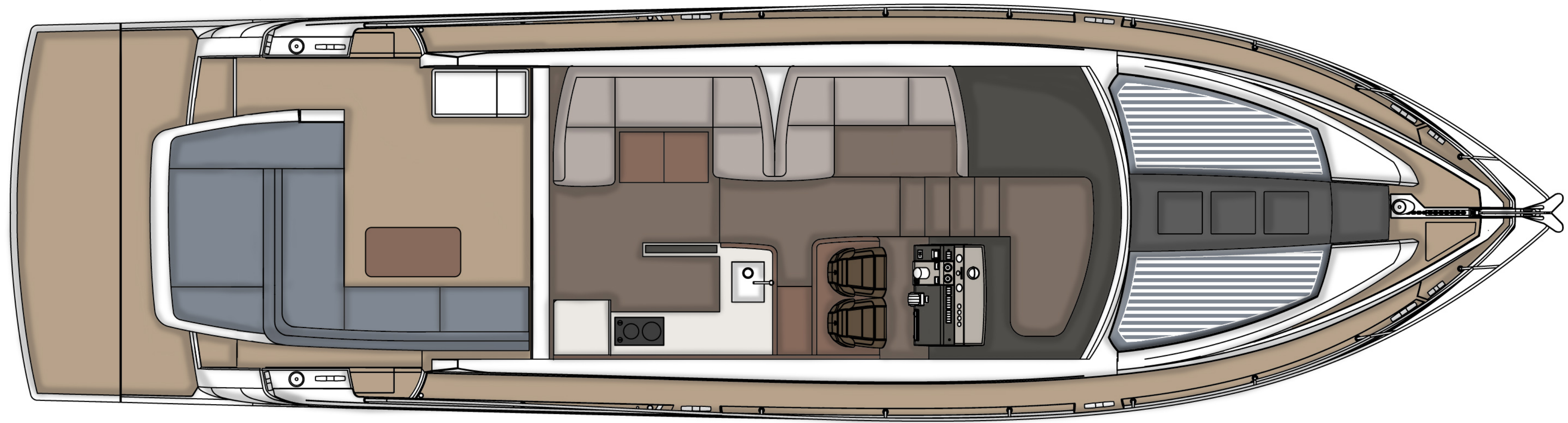


## Proportions balanced for maximum space

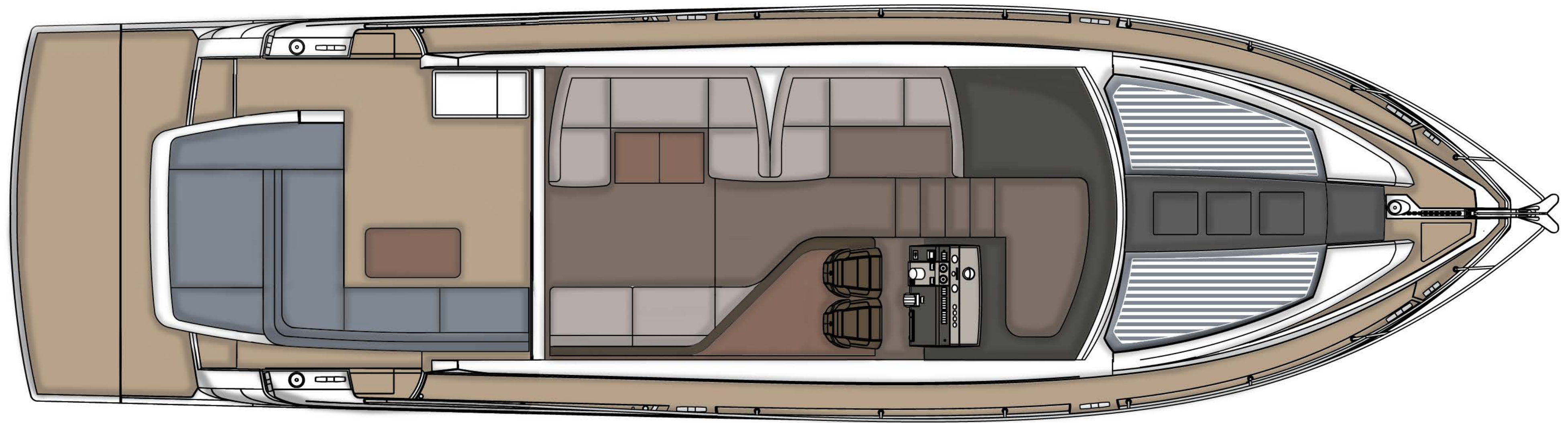
- Length overall (inc. pulpit): 55'6" (16.92m)
- Length overall (exc. pulpit): 53'6" (16.32m)
- Beam (inc. gunwale): 14'10" (4.52m)
- Number of berths: 6 – 7
- Draught: 3'11" (1.20m) unloaded
- Height above waterline (inc. arch & nav. light mast): 15'1" (4.60m)
- Transport height: 15'11" (4.87m)
- Dry weight (approx.): 19.19 imp. tons / 21.49 US tons (19,500kg)
- Fuel capacity: 530 gallons / 637 US gallons (2,412 litres)
- Water capacity (inc. calorifier): 120 gallons / 145 US gallons (550 litres)



*Main Deck Galley Up*



*Main Deck*



## Deck Plan – Main Deck

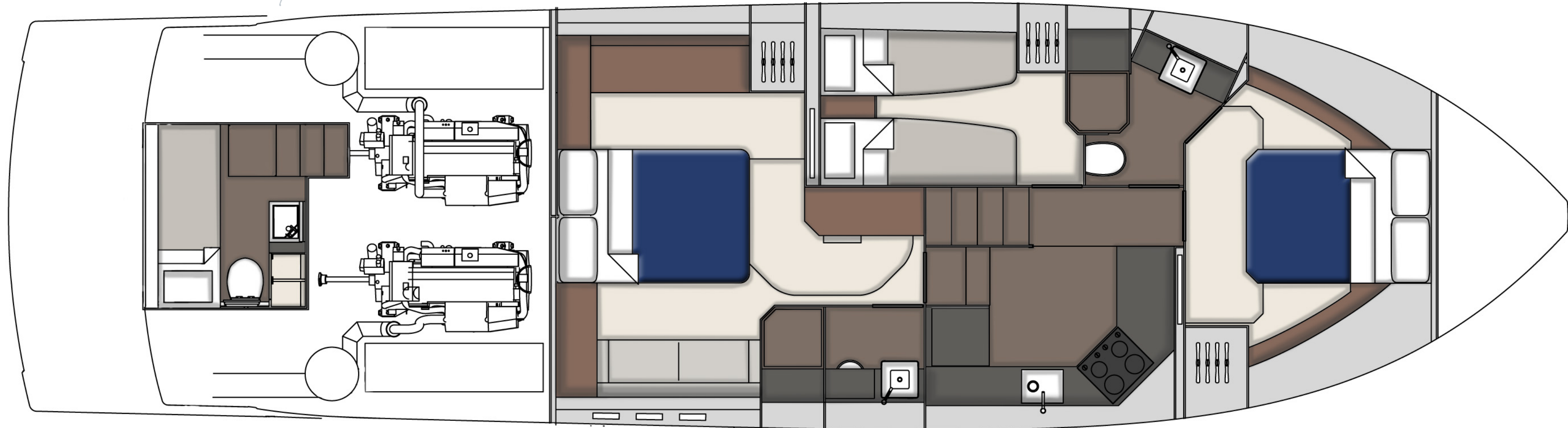
Beautifully finished and spacious, the main deck is where you and your guests can really stretch out and relax in style.

*Main Deck – sideboard in lieu of sofa*

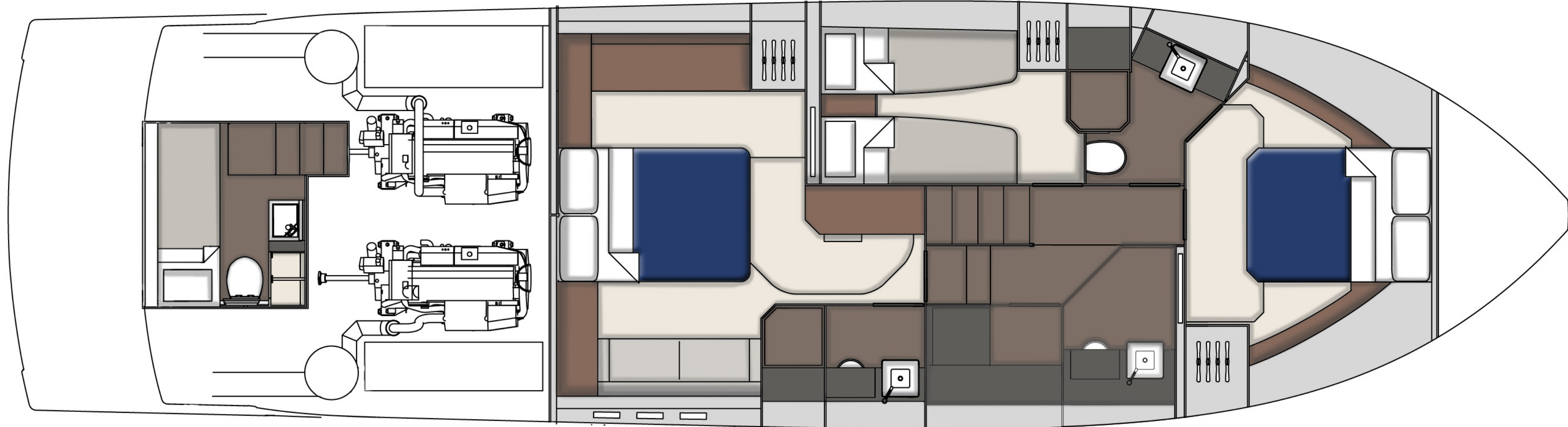




*Lower Deck Galley Down*



*Lower Deck with Day Head & Utility*



## Deck Plan – Lower Deck

There's ample space between the main and guest bedrooms, with light and airy and 2 or 3 heads options.



# Finally, everything else that goes into making the perfect yacht...

## DECK

Anchor chain locker  
 Anchor winch (electric)  
 Anchor winch controls  
 Bathing platform ladder  
 Calibrated anchor chain (50m / 27.3 fathoms)  
 Ensign & staff  
 Fender set  
 Foredeck drinks holders  
 Foredeck glazing  
 Foredeck stowage lockers  
 Fuel fillers  
 Full set of IMCO navigation lights  
 Handrail  
 Hot & cold water transom shower  
 Moulded non-slip deck surface  
 Recessed self-draining area on foredeck for coach-roof cushions  
 Remote control searchlight  
 Riding light  
 Self-stowing Delta® anchor (25kg)  
 Stainless steel aft fairleads  
 Stainless steel bow fairleads  
 Stainless steel bow, cockpit, stern & twin spring cleats  
 Stainless steel gunwale with rubber inserts  
 Stainless steel pulpit  
 Teak laid bathing platform  
 Twin horns  
 Water filler  
 Windscreen washers  
 Windscreen wipers

## HELM POSITION

12V socket  
 Adjustable/tilt steering wheel  
 Bilge pump switches with integral operating warning lights & audible alarms  
 Black mesh windscreen covers  
 Bow thruster controls  
 Controls for engine bay fire extinguisher system  
 Drinks holders  
 Electronic single-lever throttle & gear controls for port & starboard engines  
 Fuel gauges  
 Full engine instrumentation inc; tachometers, temperature gauges, audible alarms & engine hour meters  
 Garmin GHP 20 autopilot system  
 Garmin GMI 20 digital multi-function instrument system with colour display  
 Garmin VHF 300i marine radio  
 High speed magnetic compass  
 Opening window  
 Powered steering  
 Red night-light illumination to helm  
 Remote anchor winch controls  
 Rudder position indicator  
 Searchlight controls  
 Settee opposite helm with table  
 Switches for navigation & riding lights, windscreen wipers & engine bay extractor fans  
 Trim tab controls  
 Twin helm seats

## ELECTRICAL SYSTEMS

230 – 240V 50Hz  
 All 240V, 24V & 12V circuits (where applicable) protected by circuit breakers with main electrical load control panel  
 Heavy duty circuit breakers  
 Isolating switches to all batteries  
 Onan® 9.5kW generator

**12 Volt**  
 Voltage dropper from domestic batteries

**24 Volt**  
 Batteries - 2 x heavy duty batteries exclusively for port engine starting  
 Batteries - 2 x heavy duty batteries exclusively for starboard engine starting  
 Batteries - 4 x heavy duty batteries wired in parallel supplying domestic services & port engine starting  
 Circuit breaker for anchor winch  
 Emergency battery coupling system permits each engine to start from opposite battery bank  
 Regulated battery charger

**240 Volt**  
 Polarity check & earth leakage protection system  
 Power points throughout fed from shore power or generator  
 Regulated 75amp charger for domestic batteries  
 Shore power supply  
 Spare circuit breakers for optional equipment

## COCKPIT

12V heavy duty weatherproof socket  
 Access to lazarette or crew cabin  
 Access to side deck  
 Bathing platform lights  
 Boat hook  
 Deck level lighting  
 Drinks holders  
 Engine bay access hatch with stainless steel gas struts  
 Fender stowage  
 'J' shaped cockpit seating with adjustable backrest to make sunpad  
 Life raft stowage  
 Manual bilge pumps  
 Mooring warps  
 Mooring warp stowage  
 Port side access  
 Single level floor from cockpit to saloon  
 Teak laid floor throughout self-draining cockpit  
 Teak table with drinks holder  
 Transom gate  
 White vinyl cover



## THE NEW TARGA 53 GT'S FULL SPECIFICATIONS CONTINUED

### INTERIOR DECOR

Choice of interior finishes from the Amalfi, Capri, Hamptons or St Tropez interior styling ranges selected by the Fairline Interior Design Team

### HULLFORM & CONSTRUCTION

Antifouling protection to hull  
Bow thruster  
Deep 'V' forward 12.5° deadrise aft  
Design, layout & detailing by the Fairline Design Team  
Feature windows with opening portholes  
Full length moulded spray deflectors  
Hull/deck joint bolted & bonded  
Integrally moulded engine bearers  
Isophthalic gel coat backed by isophthalic resin-rich powder-bound glass mat  
Resin infused cored hull & liner with hand-laid deck & components  
Polyurethane foam cores throughout deck for strength & thermal insulation

### SALOON

40" Samsung TV with Fusion AV750 DVD/Radio & wireless connectivity  
Coffee table converts to dining table  
Electric hardtop with pneumatic seal & overhead glazing  
FAIRLINE EDITION durable tumblers (set of 6)  
Overhead lighting  
Random oak flooring  
Sideboard with stowage  
Sliding patio door to cockpit  
Sofas to port & starboard with stowage

### GALLEY

Avonite work surface  
Chopping board to sink infill  
Crockery stowage  
Extractor fan  
FAIRLINE EDITION melamine dinner service (24-piece, 6 place settings)  
Fire extinguisher  
First aid kit  
Full height fridge/freezer  
Induction hob  
Integrated waste bin  
Microwave combi oven  
Overhead lighting  
Random oak floor  
Sink with hot & cold mixer tap  
Stowage cupboards & drawers

### LOBBY

Access to electrical control panel  
Access to master cabin, guest cabin/s & day head  
Handrail  
Lighting to stair risers  
Space for (optional) domestic appliance

### Accommodation

#### Master Cabin

Aluminium venetian blinds  
Double bed with storage drawers  
Feature windows with opening portholes  
Mirror  
Overhead feature lighting  
Reading lights  
Sofa  
Vanity unit with stool  
Wardrobe

#### Master En-suite

Aluminium venetian blinds  
Avonite vanity unit locker & basin with hot & cold pressurised water  
Electric silent-flush freshwater toilet  
Extractor fan  
Full set of bathroom fittings  
Full size shower with seat & hinged door  
Large hull window with single opening porthole  
Mirror  
Mirrored lockers  
Overhead lighting  
Random oak floor  
Shower tray automatic pump-out system

### Forward Guest Cabin

Aluminium venetian blinds  
Bedside table  
Double bed with storage drawers  
Escape hatch to foredeck  
Feature windows with single opening porthole  
Overhead glazing with blind  
Overhead lighting  
Reading lights  
Wardrobe with mirrored doors

### Forward Cabin En-suite/Day Head

Aluminium venetian blinds  
Day access  
Electric silent-flush freshwater toilet  
Extractor fan  
Full set of bathroom fittings  
Full standing height shower with hinged door  
Mirror  
Mirrored lockers  
Overhead lighting  
Random oak floor  
Shower tray automatic pump-out system  
Vanity unit locker & basin with hot & cold pressurised water

### Port Guest Cabin

Aluminium venetian blinds  
Bedside table  
Feature windows with single opening porthole  
Full length berths x 2  
Mirror  
Overhead lighting  
Reading lights  
Wardrobe





## THE NEW TARGA 53 GT'S FULL SPECIFICATIONS CONTINUED

### Starboard Guest Cabin

Bedside table  
Bunk berths x 2  
Mirror  
Wardrobe

### Lazarette

Access through hatch in cockpit seating

### Crew Cabin (optional)

Access through hatch in cockpit seating  
Electric silent-flush freshwater toilet  
Feature window with blind  
Full length berth  
Hanging locker  
Mirror  
Opening porthole  
Overhead lighting  
Power point  
Random oak floor  
Sink with hot & cold mixer tap

### ENGINES & STERNGEAR

Automatic bilge pumps for forward bilge, engine bay & rudder bay with manual 'on' override  
Automatic engine bay fire extinguisher system  
Dripless shaft seals  
Electric engine bay fans  
Electro-hydraulic trim tabs with cathodic protection  
Engine air intakes  
Engine bay lights  
Engine room soundproofing  
Exhaust overheat warning system  
High capacity emergency manual bilge pump system with dedicated valves  
Manganese bronze 'P' brackets  
Manganese bronze propellers contra-rotating  
Sea cocks on all inlets/outlets below waterline  
Stainless steel alloy shafts

### FUEL SYSTEM

Changeover valve system enabling each engine to draw fuel from / return fuel to, either tank  
Emergency fuel shut-off valves accessible via cable-operated remote control  
High capacity water separators & fuel filters  
Individual fillers & vents to port & starboard  
Twin fuel tanks

### FRESHWATER SYSTEM

Automatic, pressurised supply  
Calorifier hot water system  
Water tank

### WASTE WATER SYSTEM

Holding tank (170 litres) with electric macerator pump-out

### USA SPECIFICATIONS

(in addition to or in lieu of those listed above)  
Voltage - 2 x 110V (220V) 60Hz

Whilst every effort is made to keep all sales literature up to date, it should not be regarded as an infallible statement of current specifications and does not constitute an offer for the sale of any particular boat. We continually seek to improve the specification and design of our boats, so alterations and upgrades to specifications take place continually.

Appointed dealers are not agents of Fairline Yachts Ltd and are not authorised to commit Fairline Yachts Ltd by any express or implied undertaking or representation.

Performance Figures: Power quoted in our literature for diesel inboard engines is crankshaft output.

Performance Estimates: Performance estimates are given in good faith, but are in no way guaranteed for any particular model. Dirt on the bottom of the boat, damage to the propellers, engine tuning, external water and air temperatures, and the weight of the crew, fuel and water carried can all adversely affect performance. For those and other reasons we can give no performance guarantees.





# An unrivalled dealership network

Just like the many parts that make up one of our extraordinary yachts, so too are international dealers handpicked and perfectly placed to cover anything and everything you could want from Fairline (you can visit [fairline.com](https://www.fairline.com) for details of your nearest dealer).

- |                               |                      |                      |                          |                            |
|-------------------------------|----------------------|----------------------|--------------------------|----------------------------|
| Fairline Argentina            | Fairline Côte d'Azur | Fairline Indonesia   | Fairline Morocco         | Fairline Singapore         |
| Fairline Benelux & W. Germany | Fairline Croatia     | Fairline Israel      | Fairline New South Wales | Fairline Sotogrande        |
| Fairline Brazil               | Fairline Cyprus      | Fairline Italia      | Fairline New York        | Fairline South Africa      |
| Fairline Cala d'Or            | Fairline Denmark     | Fairline Japan       | Fairline New Zealand     | Fairline South Mallorca    |
| Fairline Cape Town            | Fairline Eastbourne  | Fairline Korea       | Fairline North Mallorca  | Fairline Southampton       |
| Fairline Channel Islands      | Fairline Finland     | Fairline Malta       | Fairline Norway          | Fairline Sverige           |
| Fairline Chertsey             | Fairline Florida     | Fairline Marbella    | Fairline Philippines     | Fairline Switzerland       |
| Fairline Chesapeake           | Fairline Greece      | Fairline Menorca     | Fairline Poland          | Fairline Thailand          |
| Fairline China                | Fairline Hong Kong   | Fairline Mexico      | Fairline Portugal        | Fairline Turkey            |
| Fairline Colombia             | Fairline Ibiza       | Fairline Middle East | Fairline Queensland      | Fairline Victoria          |
| Fairline Costa Blanca         | Fairline India       | Fairline Monaco      | Fairline Russia          | Fairline Western Australia |



